

Conservation Efforts Database

FWS Status Review Team Meeting
January 2015
Lakewood CO

Kathy Hollar
Lief Wiechman



Today's Agenda

- CED Overview
- What did we ask for?
- What have we received so far?
- What are we going to do with it?
- How can you help?



The CED Team

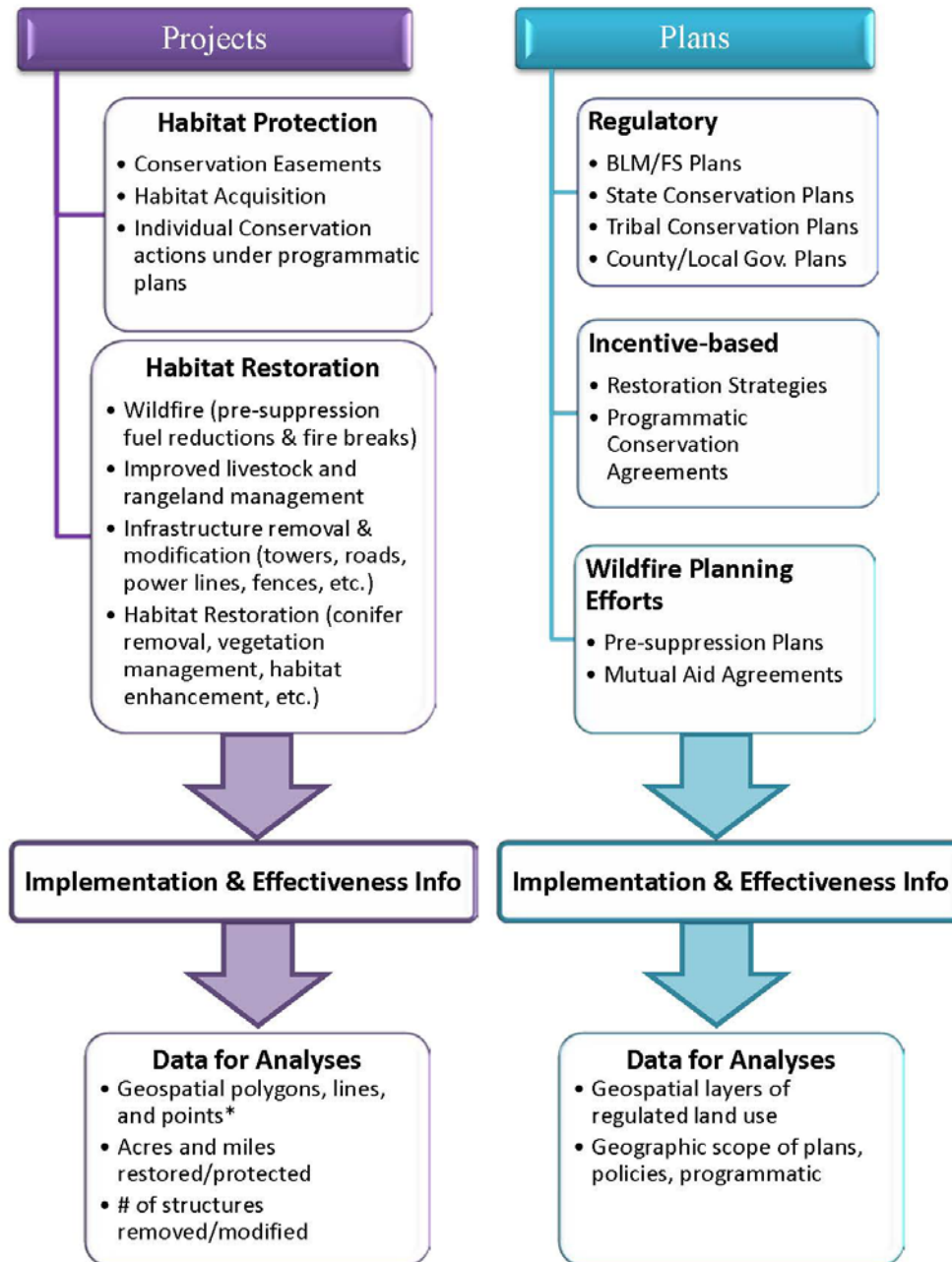
- Justin Welty, USGS Boise
- Matt Heller, FWS Great Northern LCC
- Tim Kern, USGS Fort Collins
- Don Brown, USGS Fort Collins
- Holly Freifeld, FWS
- Haylee Schweizer, USGS Fort Collins
- Lara Drizd, FWS
- Lara Juliusson, FWS
- Amy Nicholson, FWS
- James Lindstrom, FWS
- Stephanie Belarde, FWS
- Sean Finn, FWS Great Northern LCC

CED Overview – What is it?

- Web-based, geospatial
- Captures info from 2009 to present
- Conservation plans & individual projects, tabular data from large data sets, spatial data, and documentation of the data sources
- Housed on the data sharing platform, LC Map (aka ScienceBase)



Conservation Efforts



* geospatial data will be buffered to protect personally identifiable information

CED – What did we ask for?

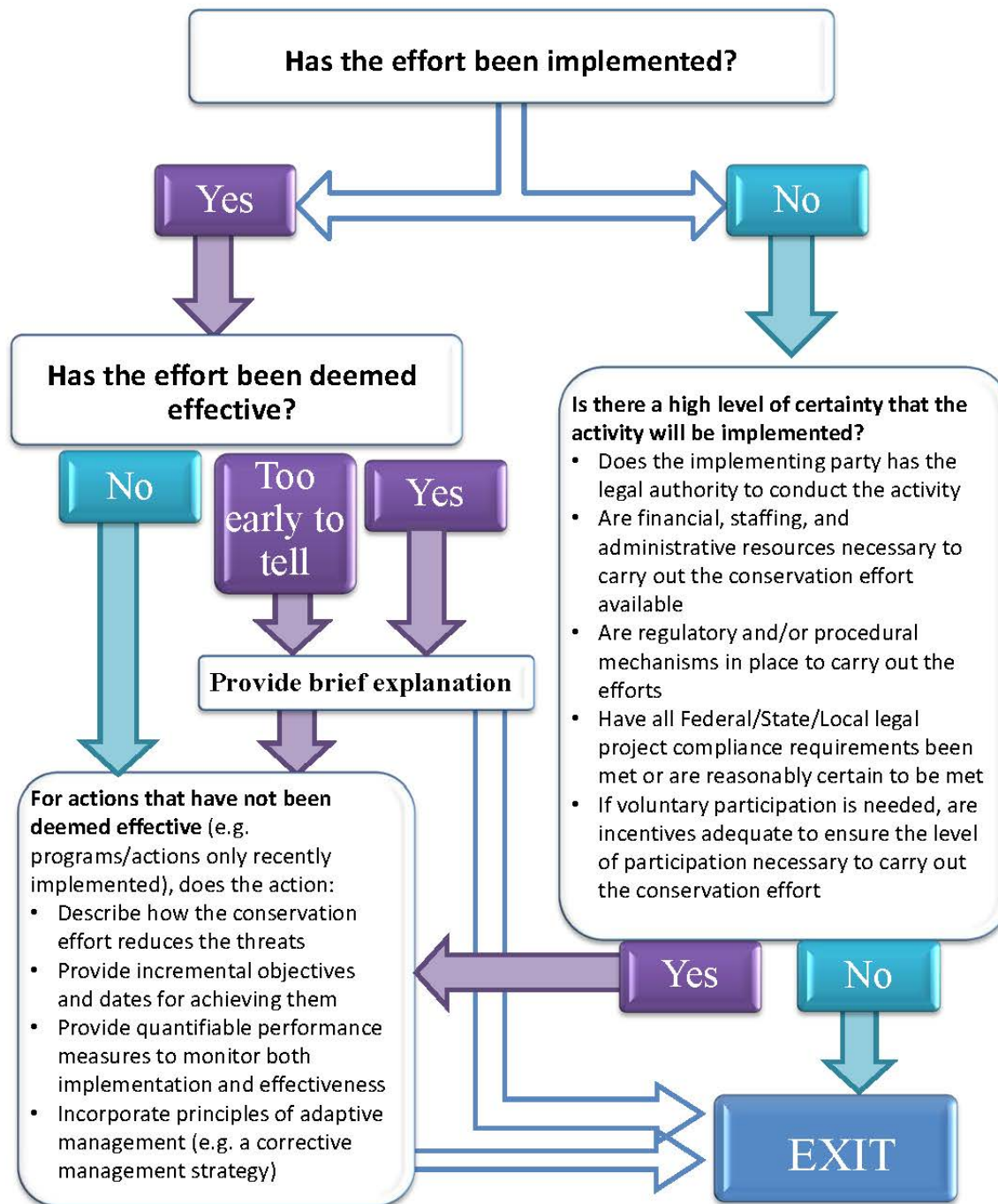
Plans: Threat-specific records for each threat addressed in regulatory plans

- Summarize how the plan addresses the suggested Conservation Objectives listed in the COT Report
- Summarize policies/regulations/ordinances to prevent/minimize/ameliorate the threat
- Upload relevant documents supporting the summary information
- Summarize funding source(s) and funding plan
- Describe any obstacles and/or successes to fully implement the plan
- Describe implementation plan for the next five years
- Describe plans for monitoring effectiveness
- Include any additional information needed to describe the plan

CED - What did we ask for?

Projects: 11 Types of “Activities” to capture metrics on:

- Acres of habitat (including but not limited to):
 - In Conservation Easements
 - Restored (wildfire/ oil & gas reclamation efforts)
 - Conifers Removed
 - Fuels Management / Fire Breaks
- Number of:
 - Structures removed (wind turbines, comm towers, other)
 - Translocation actions and number of birds moved in each action
- Miles of:
 - Linear structures removed (roads and powerlines)
 - Fence marked/ modified
 - Power lines buried / retrofitted
 - Roads closed or decommissioned to improve rangeland health
 - Road and trail closures / trails rerouted



CED – The Invitation Process

- Multiple discussions/presentations at RISC Team, SGTF, and EOC meetings
- Data Call Letter sent in August 2014
- Approximately 12 Webinars
- Targeted Outreach by Field and ‘Reminder’ Outreach in December 2014

CED - Who Came to the Party? ?

The Feds:

- BLM
 - Plans in SB end of March
 - 4,500 Projects in the CED
- USFS
- DoD - Yakima Training Center, WA
- BIA – Wind River Agency
- FWS – Refuges and Partners Program
- NRCS (Summary Info in SB end of the month?)
- FSA (no response yet)

CED - Who Came to the Party? ?

The States:

- California
 - Fish and Wildlife
- Colorado
 - Parks & Wildlife
- Idaho
 - Department of Lands
 - Fish & Game
- Montana
 - Fish, Wildlife & Parks
- North Dakota
 - Game & Fish
- South Dakota
 - Game, Fish, and Parks
- Nevada
 - Southern NV Water Authority
 - Department of Wildlife
 - Consv and Natural Resources
- Oregon
 - Department of State Lands
 - Fish and Wildlife
 - Watershed Enhancement Board
- Utah
 - Department of Natural Resources
- Wyoming
 - Game & Fish

CED - Who Came to the Party? ?

- NGOs: American Colloid Co, Chesapeake Energy Co, Hayden-Wing Assoc, Rocky Mountain Power, SWCA Env Consultants, Two Birds – One Stone, Thunder Basin Grasslands Prairie Ecosystem Assoc
- SWCDs: Harney, Baker OR
- Counties: zero
- Local Working Groups: zero
- Tribes: zero

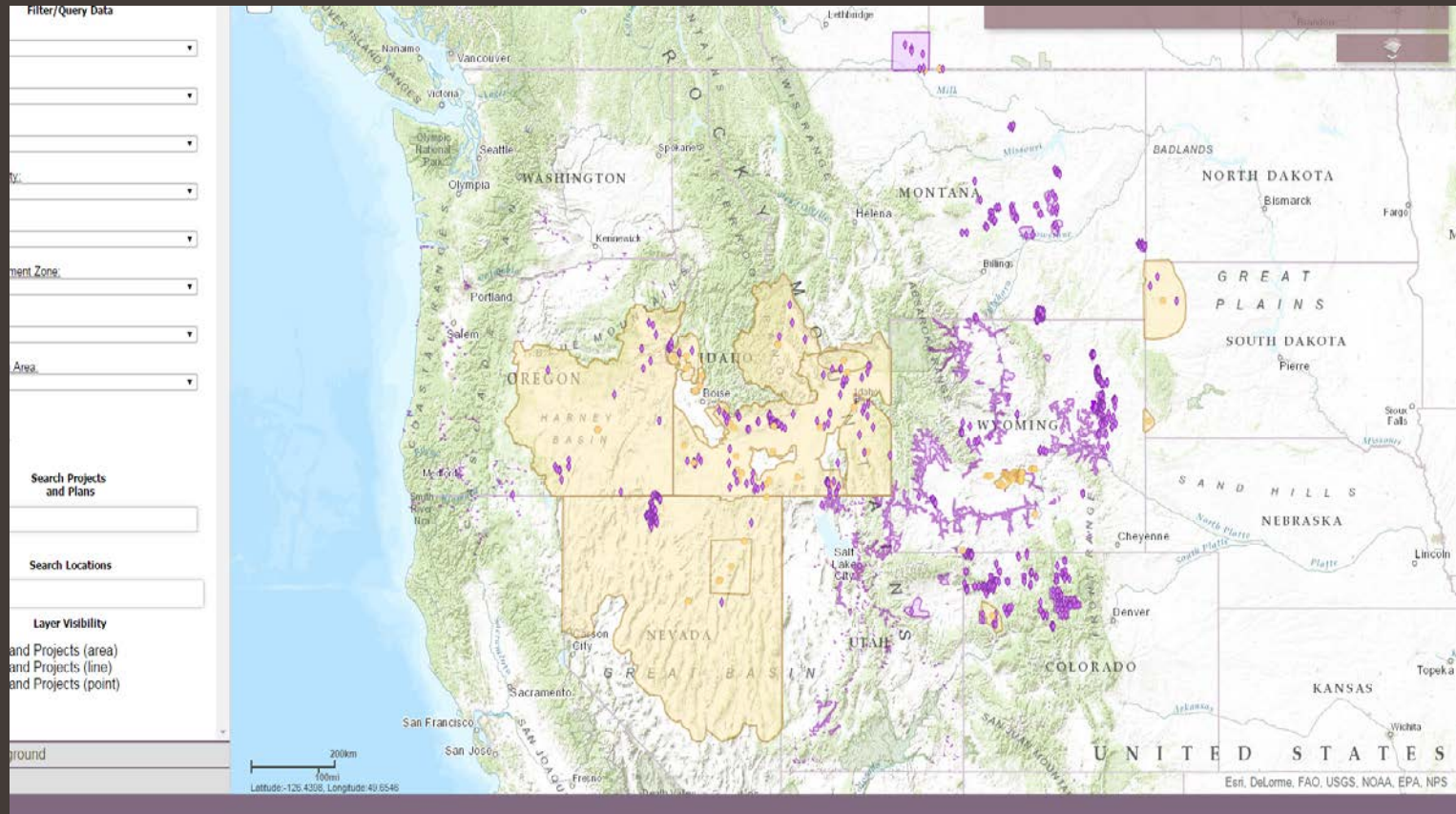
CED - What did we Get?

- Individual Records: 274
- Batch Uploads:
 - BLM 4,000+ efforts
 - Wyoming 450+ efforts
 - Utah 400+ efforts
 - Partners Program 300 efforts
 - USFS, OWEB, ID Lands
- NRCS – summary info only on it's way

5,000 Efforts
.....so far



CED Interactive Map



Conservation
Efforts Database

USFWSUSGSLANDSCAPE CONSERVATION COOPERATIVES

FOCUS SPECIESBATCH UPLOADABOUT CEDFAQHELPHOME

View Tabular ResultsView Map ResultsView DocumentationDownload Results as CSVClear Query

Note: The default for each list is all values. All parameters are taken into account when performing a query, which means if users select counties that do not fall within a selected state only those values within the selected states AND counties will be returned. Only Approved projects can be queried from the data.

Agency/Conservation Partner:

Agencies Selected: (Default All)

Office/Name of Agency or Organization:

Offices Selected: (Default All)

Entry Type:

Entry Types Selected: (Default All)

Implementation Status:

Implementation Selected: (Default All)

Effectiveness Status:

Effectiveness Selected: (Default All)

Year(s):

Start to End Year Includes: (Default All)

Activity Type:

Activity Types Selected: (Default All)

Activity:

Activities Selected: (Default All)

Subactivity:

SubActivities Selected: (Default All)

Metric Value

SAGE-GROUSE CED

ENTER DATA

BATCH UPLOAD DATA

QUERY DATA (NEW!)

SUMMARY DATA

INTERACTIVE MAP

USER PROFILE

CHANGE PASSWORD

APPROVING OFFICIALS

ADMINISTRATORS

SAGE-GROUSE CED ABOUT

SAGE-GROUSE CED HELP

SAGE-GROUSE CED HOME

LOGOUT

U.S. Fish & Wildlife Service | U.S. Geological Survey | Landscape Conservation Cooperatives | Contact Us

CED - Google Chr...Conservation Effo...Microsoft Excel - ...

CED – What will do with this info?

- Use in models (Oil & Gas, Ag Conversion, Fire, Conifer Encroachment)
- Use in Mid-Range Analyses (simple overlays of threat, species location, and conservation efforts)
- Use in Qualitative Narratives (summary totals, e.g. # of efforts/acres in total population)

CED - How can you help?

- Register in the CED!!!
- Run queries.
- Review the Effort Map.
- Review State/Population reports and look for obvious gaps – are you aware of significant conservation efforts that haven't been captured in the CED? Call your Partners!
- Review projects for Effectiveness



CED - How can you help?

- Collection, Organization, and Evaluation of Conservation Efforts
 1. Efficiently review CED data to ensure FWS biologists are spending time on the efforts of greatest conservation benefit in a given geography.
 2. Reduce discounting or devaluing individual conservation efforts that can cumulatively be of significance (i.e. - death by 1,000 cuts and recovery by 1,000 bandaids).
 3. Streamline ability to incorporate new information for the September 2015 status report, and subsequent years if needed.
 4. Allow for most concise, defensible, and repeatable process for incorporating information related to conservation into species report

CED - How can you help?

- Eleven Steps

1. Query

- Canned Queries

2. Filter

- Threat Presence and Magnitude

3. Reports

- Summarized by
WAFWA MZ and Threat



CED - How can you help?

- Eleven Steps
 4. Defer
 - Provide rationale
 5. Assessment
 - Effectiveness evaluation by Field Offices
 6. Certify or Defer Effectiveness
 - Document Rationale
 7. Query Refinement
 - Refined 'Canned Queries'



CED - How can you help?

- Eleven Steps

8. Quantify Metrics

- Provide rationale

9. Analysis Support

- Rolling up for decision support

10. 'Plan' evaluation

- LUPs, State, Local, Voluntary

11. Species Report

- Roll up by threat, MZ
- Factor D write-up



